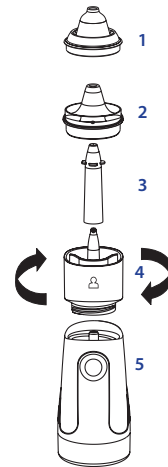




RhinoClear Sprint Parts

1. Blue-tipped nasal adapter
2. Clear plastic separator cap
3. White atomizer tip
4. Removable and washable flask with two separate chambers - one for saline solution and one for discharge.
5. Atomizer base with ergonomic handle

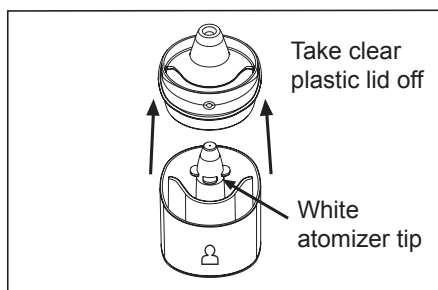
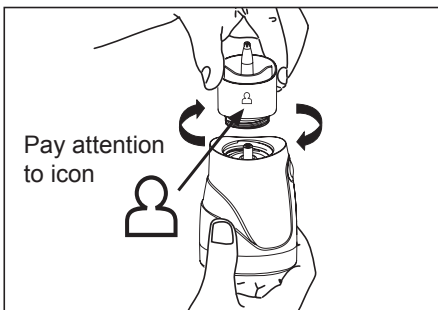
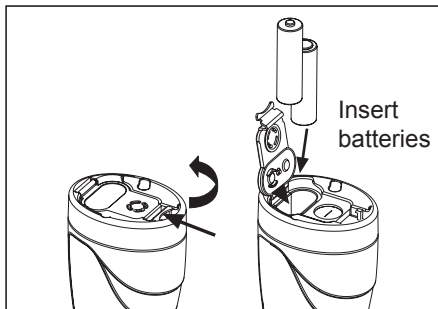


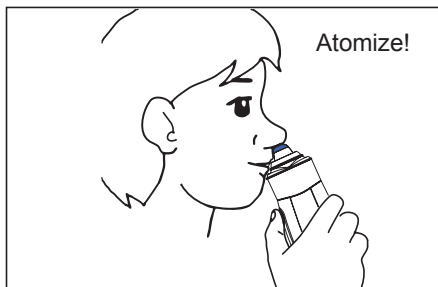
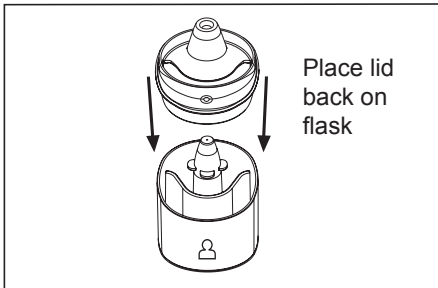
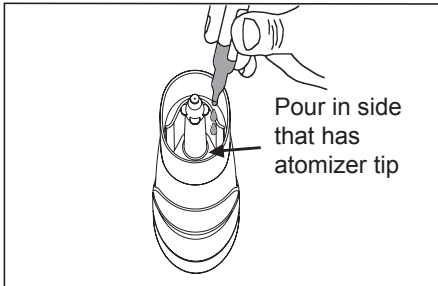
Assembly

1. Insert two AA batteries into the bottom of the atomizer base. Pay attention to the direction noted on the inside of the battery compartment.

2. Attach the plastic flask by twisting it on. Make sure the icon of the person on the flask is facing the side with the green button.

3. Remove the clear plastic lid that is on top of the flask. Make sure the white atomizer tip is in place.





Use

1. Pour contents of one vial of saline solution into the chamber of the flask that contains the white atomizer tip. The other side with the icon of a person on the chamber is for collecting discharge.
2. Place the clear plastic lid back on the flask. Then attach the blue rubber nasal adapter on top of the lid.
3. Place the blue tip of the nasal adaptor inside one nostril. Make sure the discharge side (with the icon of the person) is facing you. Start the atomizer by holding down the green button and breathing in gently (as if you are smelling a flower) for 10 seconds. Release the button while breathing out.
4. Repeat for the opposite nostril. Switch back and forth while atomizing, dividing the saline solution evenly between both nostrils.
5. After use, clean atomizer with warm water and soap. **DO NOT PUT ATOMIZER PARTS IN BOILING WATER.**

► **IMPORTANT:** When using a saline rinse, always use distilled water. Tap water may contain harmful bacteria that can get into your nasal passages. If you can not find distilled water, boil water for 5 minutes and allow it to cool until it is lukewarm. Dispose of boiled water within 24 hours.